

RETAIL FOR LEASE

ICON Building
321 East Main Street
Norfolk, VA

NEW GLASS
STOREFRONT

- 3,426 contiguous sf first floor retail - large outdoor patio. Lower level available for larger concept.
- In close proximity to Hilton, Marriot and Sheraton hotels.
- 4,000+ employees w/in a 1 block radius.
- 2 blocks from Norfolk Central Business District (30,000+ employees).
- 269 apartment units above retail space. 425 residents
- Garage and on street parking available
- Close proximity to light rail and many Norfolk attractions

**Asking Rent \$25 psf
NNN (nets - \$2.00)**



For Information Contact:
John A. Merenda
3908 Meeting House Road
Virginia Beach, VA 23455
Phone: (757) 318-9244
Cell: (757)560-5476
Fax: (757) 222-2379
johnmerenda1@yahoo.com



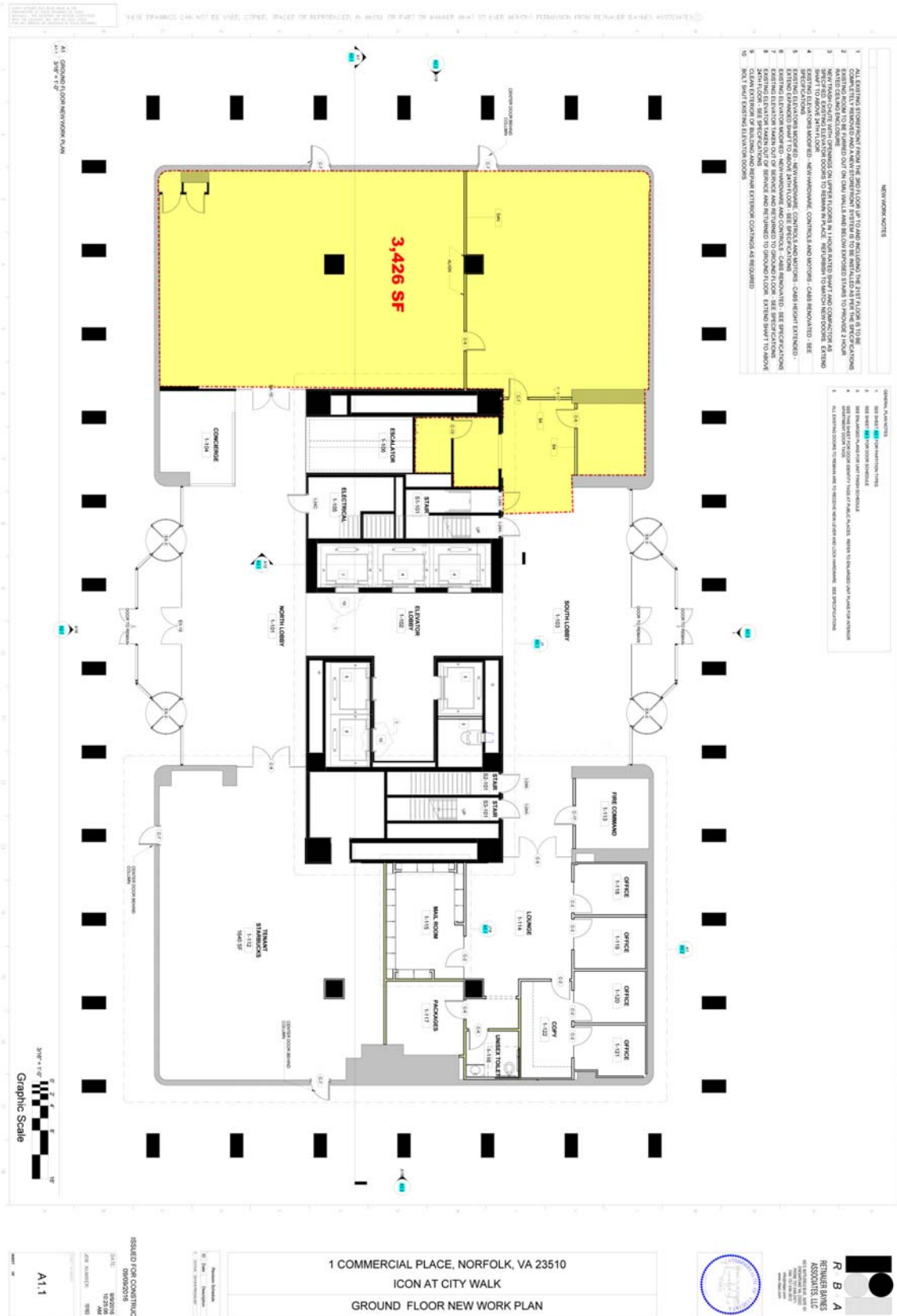
321 East Main Street, Norfolk, VA



321 East Main Street, Norfolk, VA



321 East Main Street, Norfolk, VA



321 East Main Street, Norfolk, VA



