

FOR LEASE

3600 Elm Avenue, Portsmouth, VA
RAIL ACCESS



- Across the street from Norfolk Naval Shipyard
- 5,275 SF Office; Stand Alone Office 2,300; 38,949 SF Dock High Warehouse; 17,476 SF Grade Level Warehouse; 34,488 SF Low Ceiling Warehouse; 2,118 SF Mechanic Shop; 100,606 SF Total
- 21.28 Total Acres - ±5.5 acres undeveloped site - ±14.3 acres developed site stabilized with significant trailer storage capacity
- 5 rail spurs each ±750'; Norfolk Portsmouth Beltline
- 3 grade doors - (1) 8' x 8' - (2) 10' x 11' - (1) 12' x 16'
- 10 dock doors
- 21' - 24' ceiling heights
- Truck Scale can convey separately (60' x 10' 100,000 LB capacity)
- IN - Heavy Industrial Zoning

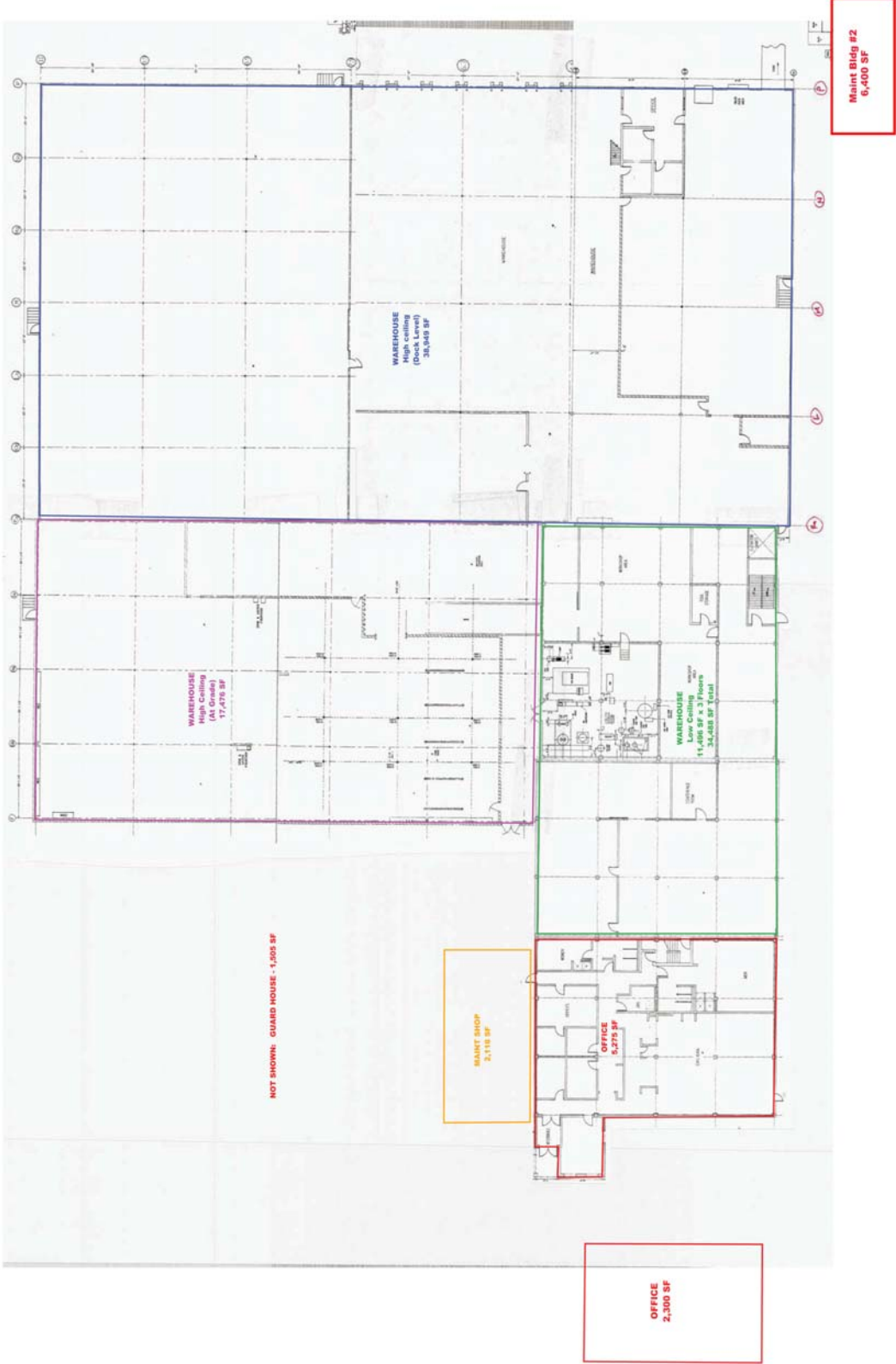
For Information Contact:

John A. Merenda
3908 Meeting House Road
Virginia Beach, VA 23455
Phone: (757) 318-9244
Cell: (757) 560-5476
Fax: (757) 222-2379
johnmerenda1@yahoo.com



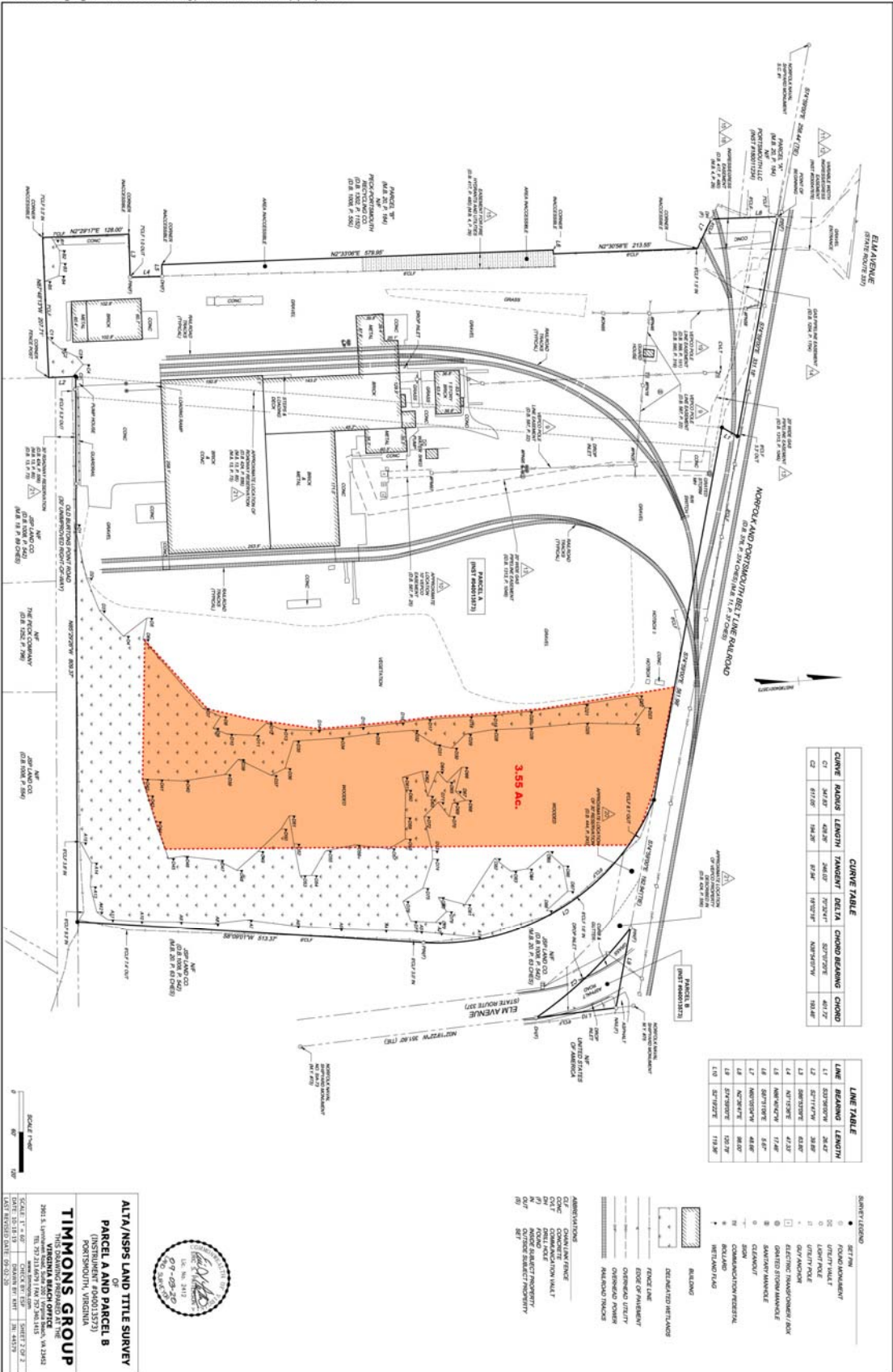
3600 Elm Avenue, Portsmouth, VA

3600 Elm Ave., Portsmouth, VA



3600 Elm Avenue, Portsmouth, VA

Y:\09044579-3600_Elm_Ave\DWG44579-605V-ALTA.dwg | Plotted on 9/3/2020 1:31 PM | by Kelly Telesen



3600 Elm Avenue, Portsmouth, VA

