

# FOR LEASE

202 S. Battlefield Boulevard,  
Chesapeake, VA



## \$26 psf NNN

- Up to 3,990 square feet available.
- Zoning B-1.
- Stand alone building located in the busy Great Bridge commercial corridor with many national tenants within close proximity.
- Excellent visibility and full access from Battlefield Blvd.
- Access to new traffic light planned at corner of Albemarle and Battlefield in December 2020.
- HUGE Pylon Sign
- Ample parking with Cross easement and shared parking agreement in place

***For Information Contact:***

**John A. Merenda**  
3908 Meeting House Road  
Virginia Beach, VA 23455  
Phone: (757) 318-9244  
Cell: (757) 560-5476  
Fax: (757) 222-2379  
[johnmerenda@cox.net](mailto:johnmerenda@cox.net)

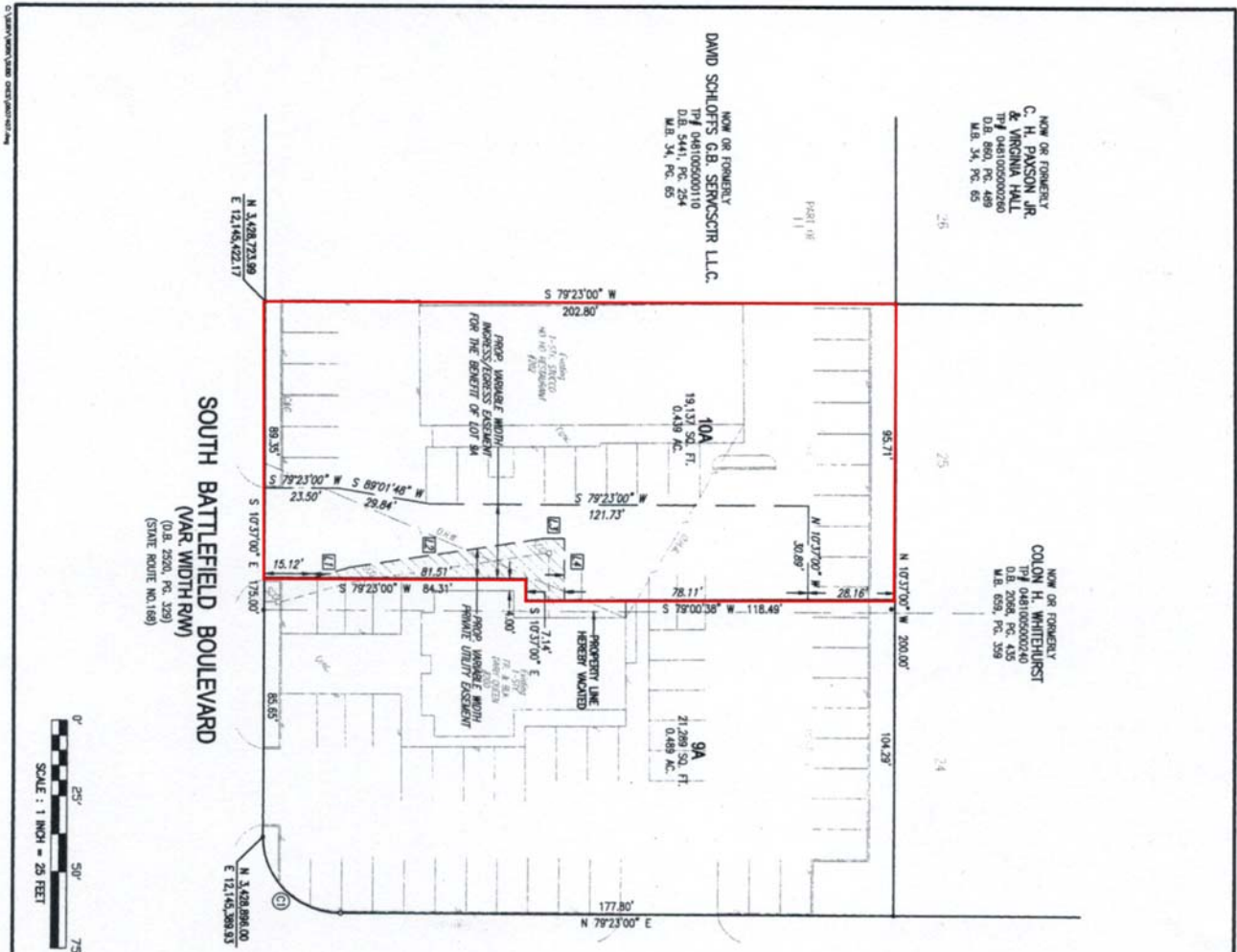


**202 S. Battlefield Boulevard, Chesapeake, VA**





# 202 S. Battlefield Boulevard, Chesapeake, VA

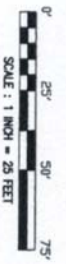


NOW OR FORMERLY  
C. H. PAXSON, JR.  
& VIRGINIA HALL  
TP# 0481005000110  
D.B. 5441, PG. 254  
M.B. 34, PG. 65

NOW OR FORMERLY  
DAVID SCHLOFFS G.B. SEWICKS JR. LLC  
TP# 0481005000110  
D.B. 5441, PG. 254  
M.B. 34, PG. 65

NOW OR FORMERLY  
COLON H. WHITEHURST  
TP# 0481005000110  
D.B. 5441, PG. 254  
M.B. 34, PG. 65

ALBEMARLE DRIVE  
(40' RW)  
(M.B. 23, PG. 92-93)



**CURVE TABLE**

CHAIN	RADIUS	ARC LENGTH	TANGENT	CHORD LENGTH	CHORD BEARING	DELTA
C1	25.00'	28.67'	25.00'	35.36'	N 55°37'00" W	90°00'00"

**LINE TABLE**

LINE	BEARING	DISTANCE
L1	S 63°20'37" W	12.94'
L2	S 79°18'00" E	61.18'
L3	S 79°23'00" E	61.57'
L4	S 103°59'22" W	20.00'



CR. CR. RECORDED  
G.A. WILSON  
DANVILLE, VA  
MAYNOR, L252 PAGE 688  
FAYE W. MITCHELL, CLERK  
BY *[Signature]*  
SIN. D.B. PAGE



**Digital Survey Services LLC**  
LAND SURVEYING AND MAPPING  
2000 W. WILSON ROAD, SUITE 6  
DANVILLE, VA 22026  
(757) 424-4300 (FAX) 424-4396

**G. A. WILSON ESTATES**  
ALSO KNOWN AS GREAT BROOK LAKES  
RESIDENT HOME ADDRESS - ONEBENTON WINDMILL

RESUBDIVISION  
PART OF LOT 8  
A PART OF LOT 10

DATE: JUNE 12, 2007  
SCALE: 1" = 25'

DATE	BY	CHKD BY	DATE
JUN 12 2007	MD	MD	06/15/2007

2 OF 2

S(R)-07-63



# 202 S. Battlefield Boulevard, Chesapeake, VA

